

House - Mid Terrace (EPC Rating: D)

**27 CLUB STREET, SHEFFIELD, S11 8DE**

Per week

**£311 Per week**



4



1



1



D

# 4 Bedroom House - Mid Terrace located in Sheffield

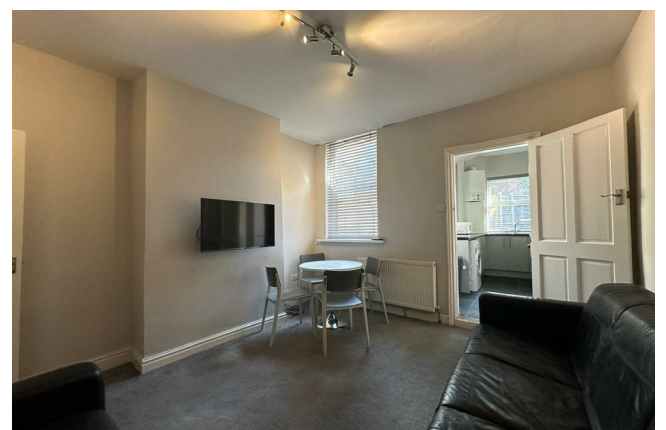
Fantastic 4-Bedroom Property – Perfect for Students, Professionals or a family.

Location, Comfort, and Style – All in One Home!

This lovely, modern property is ideal for students, professionals or a large family looking for stylish accommodation with excellent access to Sheffield's city centre. Conveniently situated just a short walk from Ecclesall Road, the property is perfect for students at Sheffield Hallam University's City and Collegiate Campuses or professionals working in the City Centre. It is a short walk to Sheffield train station if you commute to nearby cities for work also.

Nestled in a vibrant area bustling with local shops, coffee bars, pubs, and unique independent stores, you'll have everything you need right on your doorstep.

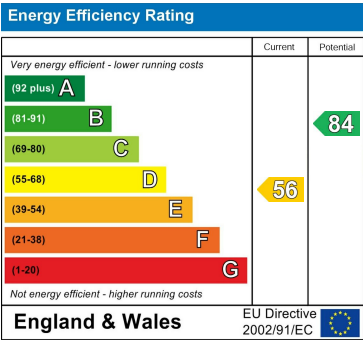
Key Features:



Council Tax Band

A

Energy Performance Graph



Call us on  
0114 2129777  
[hello@rent2you.org](mailto:hello@rent2you.org)  
[rent2you.org](http://rent2you.org)

Agents Note: Whilst every care has been taken to prepare these particulars, they are for guidance purposes only. All measurements are approximate and are for general guidance purposes only and whilst every care has been taken to ensure their accuracy, they should not be relied upon and potential buyers are advised to recheck the measurements.

